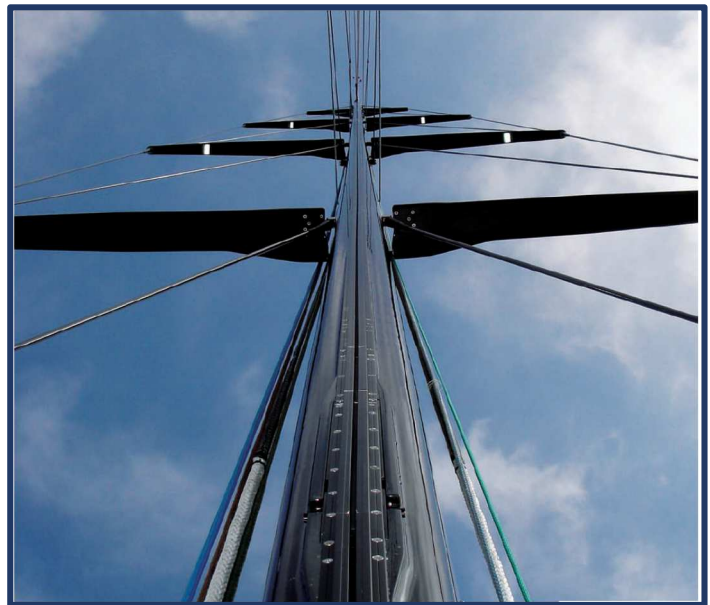


NAVTEC FRANCE

FIBER BICONIC



Grand prix race performance with Navtec fiber rigging



Custom specified Navtec PBO rigging

NAVTEC FRANCE - P.A de la Siagne, Allée Charles Nungesser 06210 MANDELIEU – France
T. 33(0)4 93 90 24 60 - F. 33(0)4 93 90 24 61 – EMail : navtec@navtecsudeurope.fr
<https://www.facebook.com/navtecsudeurope.fr>
SIRET 793 366 733 00012 – APE 3315Z – TVA INTRA FR56793366733 – CAPITAL 255 001 € - RCS CANNES 793 366 733



NAVTEC FRANCE

FIBER BICONIC

For the past 30 years, Navtec has been at the forefront of yacht rigging. And for the past 20 years, we have been perfecting the performance of fiber rigging, offering the greatest combination of materials and terminations. As fiber technology constantly evolves, the Navtec Design Team continue to deliver innovative rig solutions.

Navtec Biconic Aramid & PBO Rigging

Until the introduction of PBO, Navtec Aramid rigging was the industry standard. Over the years, it has undergone as much development as any Navtec rigging product. The biconic compression fitting was redesigned in 2001 to be more efficient in its connection the pre-made unidirectional aramid cables. The fittings are now stronger and safer than ever before, and Aramid continues to be a successful offering in our fiber rigging product line.

Navtec was the company to introduce a biconic compression fitting to terminate PBO. We use titanium terminations to ensure the most efficient use of strength available in a PBO fiber bundle. Because of this, Navtec biconic terminations are the safest available, when compared to other PBO termination methods.

Navtec offers many standard sizes of pre-made cable to meet a number of application requirements. These consist of unidirectional Aramid or PBO fibers assembled in a way that minimizes the constructional stretch characteristics inherent in fiber cable production. The use of Navtec biconic fittings with our Aramid or PBO cable ensures a long lasting performance upgrade for any application.

One unique aspect of the cable design is the protective coating that is extruded around the fiber bundle during the cable manufacturing process. For PBO cables it is a glossy, dark grey cover, whereas the Aramids a matte, black cover. This cover seals and protects the fiber bundle from the damaging effects of UV and moisture and also provides a high level of abrasion resistance, plus low windage.



NAVTEC FRANCE

Aramid Biconic End Fittings

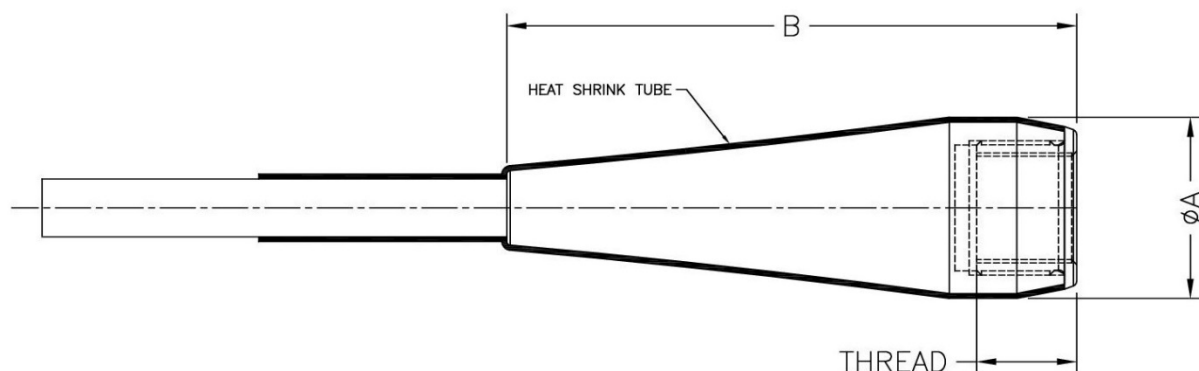
Aramid Fiber Cable

SIZE	COVER DIAMETER		MINIMUM BREAKING STRENGTH		WEIGHT		STRETCH EQUIVALENT	
	in	mm	lbs	kg	lbs/ft	kg/m	N50 rod	1x19
3,8T	0,335	8,5	8 554	3 880	0.037	0.055	-4	5mm
5T	0,394	10,0	11 244	5 100	0.050	0.075	-6	6mm
7T	0,472	12,0	15 741	7 140	0.072	0.107	-8	7mm, 9/32
9T	0,516	13,1	20 238	9 180	0.085	0.127	-10	8mm, 5/16
12T	0,591	15,0	27 007	12 250	0.111	0.166	-12	9/16
15T	0,661	16,8	33 731	15 300	0.140	0.209	-17	10mm
20T	0,752	19,1	44 974	20 400	0.182	0.271	-22	12mm
25T	0,866	22,0	56 218	25 500	0.241	0.359	-30	14mm, 9/16
31T	0,984	25,0	69 666	31 600	0.312	0.465	-40	16mm, 5/8
43T	1,130	28,7	96 783	43 900	0.410	0.611	-48	19mm, 3/4
54T	1,272	32,3	121 475	55 100	0.520	0.775	-60	22mm, 7/8
75T	1,571	39,9	177 693	80 600	0.793	1.183	-91	26mm, 1
90T	1,677	42,6	202 384	91 800	0.903	1.347	-115	28mm, 1 1/8
120T	1,961	49,8	269 846	122 400	1.241	1.850	-150	32mm, 1 1/4
150T	2,228	56,6	337 307	153 000	1.549	2.310	-195	
200T	2,563	65,1	449 743	204 000	2.039	3.040	-260	
250T	2,811	71,4	562 399	255 100	2.435	3.630	-320	
300T	3,039	77,2	674 879	306 120	2.844	4.240	-320	

Aramid Sockets

R572-46 Aluminum sockets

Made from high-strength aluminum. Includes the socket, cone and 316 Stainless Steel reducer. Used with eyes. T's swivel eyes, studs, forks, toggles, shroud terminals and lashing eyes to make a complete line of fitting for the soft Kevlar.

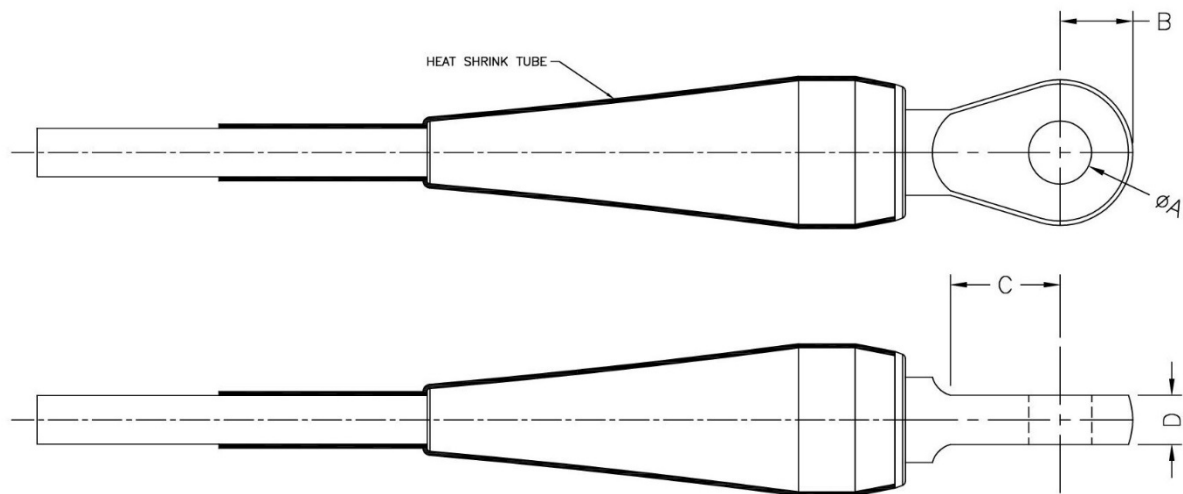


NAVTEC FRANCE

PART NUMBER	SIZE	A (Body Ø)		B		THREAD UNF	WEIGHT	
		in	mm	in	mm		lbs	kg
R572-46-03T-18	3,8T	1,039	26,4	3,437	87,3	9/16-18	0,137	0,062
R572-46-05T-20	5T	1,201	30,5	3,976	101,0	5/8-18	0,227	0,103
R572-46-07T-24	7T	1,402	35,6	4,705	119,5	3/4-16	0,377	0,171
R572-46-09T-28	9T	1,539	39,1	5,181	131,6	7/8-14	0,470	0,213
R572-46-12T-36	12T	1,850	47,0	5,835	148,2	1 1/8-12	0,688	0,312
R572-46-15T-36	15T	1,949	49,5	6,531	165,9	1 1/8-12	0,888	0,403
R572-46-20T-40	20T	2,150	54,6	7,508	190,7	1 1/4-12	1,318	0,598
R572-46-25T-44	25T	2,476	62,9	8,724	221,6	1 3/8-12	2,053	0,931
R572-46-31T-48	31T	2,724	69,2	9,642	244,9	1 1/2-12	2,773	1,258

R572-47 Marine Eye Terminal

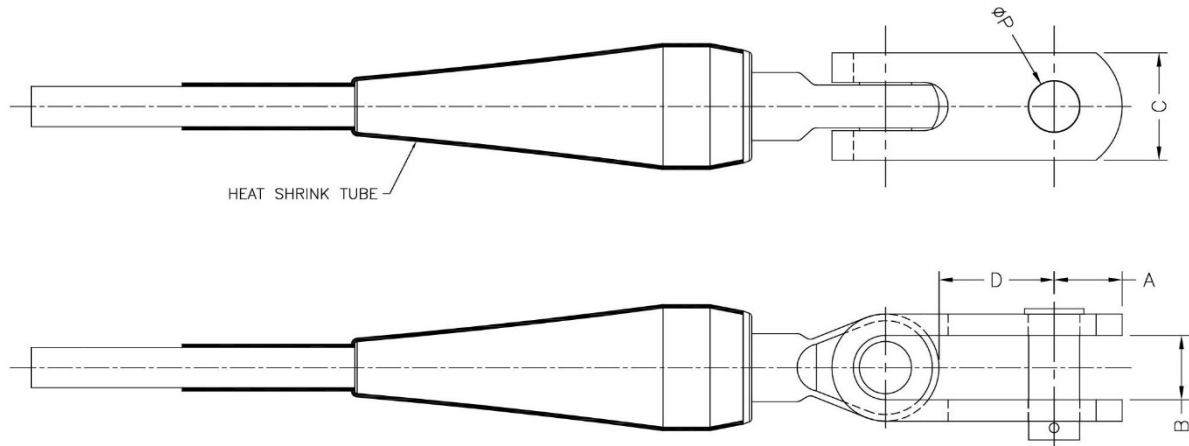
Offers the highest strength and lowest weight in terminal bodies and reducers. Low-weight, High-strength anodized aluminum bodies are used to mate with high modulus Aramid fiber Cable. End fittings are made from 316 stainless.



PART NUMBER	SIZE	A (Hole Ø)		B		C		D		WEIGHT	
		in	mm	in	mm	in	mm	in	mm	lbs	kg
R572-47-03T8-12	3,8T	0,374	9,5	0,429	10,9	0,630	16,0	0,354	9,0	0,236	0,107
R572-47-03T8-14	3,8T	0,445	11,3	0,492	12,5	0,709	18,0	0,374	9,5	0,247	0,112
R572-47-03T8-16	3,8T	0,512	13,0	0,591	15,0	0,827	21,0	0,374	9,5	0,258	0,117
R572-47-05T-16B	5T	0,520	13,2	0,551	14,0	0,827	21,0	0,378	9,6	0,335	0,152
R572-47-07T-16B	7T	0,531	13,5	0,650	16,5	0,787	20,0	0,394	10,0	0,617	0,280
R572-47-07T-20B	7T	0,650	16,5	0,748	19,0	0,866	22,0	0,472	12,0	0,683	0,310
R572-47-09T20B	9T	0,650	16,5	0,709	18,0	0,945	24,0	0,472	12,0	0,893	0,405
R572-47-12T-24B	12T	0,768	19,5	0,886	22,5	1,339	34,0	0,598	15,2	1,545	0,701
R572-47-12T-28	12T	0,886	22,5	0,984	25,0	1,417	36,0	0,709	18,0	1,702	0,772
R572-47-15T-24B	15T	0,768	19,5	0,886	22,5	1,339	34,0	0,598	15,2	1,706	0,774
R572-47-15T-28	15T	0,886	22,5	0,984	25,0	1,417	36,0	0,709	18,0	1,870	0,848
R572-47-20T-28B	20T	0,906	23,0	0,925	23,5	1,181	30,0	0,709	18,0	2,469	1,120
R572-47-25T-32B	25T	1,024	26,0	1,043	26,5	1,339	34,0	0,787	20,0	3,455	1,567
R572-47-31T-36B	31T	1,122	28,5	1,299	33,0	1,969	50,0	0,984	25,0	4,361	1,978

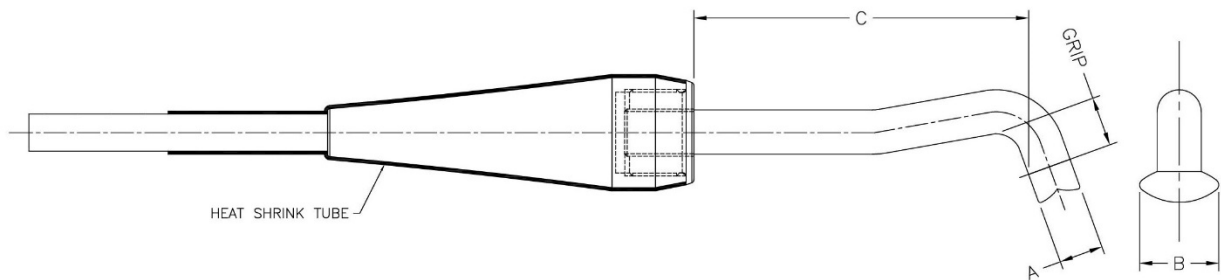
NAVTEC FRANCE

R572-48 Double Jaw Toggle



PART NUMBER	SIZE	P (Pin Ø)		A		B		C		D		WEIGHT	
		in	mm	in	mm	in	mm	in	mm	in	mm	lbs	kg
R572-48-03T8-12	3,8T	0,366	9,3	0,626	15,9	0,386	9,8	1,000	25,4	1,181	30,0	0,397	0,18
R572-48-03T8-14	3,8T	0,429	10,9	0,638	16,2	0,449	11,4	1,000	25,4	1,181	30,0	0,520	0,236
R572-48-05T-16B	5T	0,500	12,7	0,709	18,0	0,709	18,0	1,181	30,0	1,299	33,0	0,734	0,333
R572-48-07T-16B	7T	0,500	12,7	0,709	18,0	0,709	18,0	1,181	30,0	1,220	31,0	0,994	0,451
R572-48-07T-20B	7T	0,618	15,7	0,787	20,0	0,787	20,0	1,378	35,0	1,575	40,0	1,323	0,6
R572-48-09T-20B	9T	0,618	15,7	0,787	20,0	0,787	20,0	1,378	35,0	1,575	40,0	1,713	0,777
R572-48-12T-24B	12T	0,748	19,0	1,000	25,4	0,945	24,0	1,575	40,0	1,693	43,0	2,932	1,33
R572-48-12T-28B	12T	0,866	22,0	1,181	30,0	1,024	26,0	1,969	50,0	1,850	47,0	4,081	1,851
R572-48-15T-24B	15T	0,748	19,0	1,000	25,4	0,945	24,0	1,575	40,0	1,693	43,0	3,093	1,403
R572-48-15T-28B	15T	0,866	22,0	1,181	30,0	1,024	26,0	1,969	50,0	1,850	47,0	4,242	1,924
R572-48-20T-28B	20T	0,866	22,0	1,181	30,0	1,024	26,0	1,969	50,0	1,850	47,0	4,753	2,156
R572-48-25T-32B	25T	1,000	25,4	1,417	36,0	1,260	32,0	2,362	60,0	2,047	52,0	7,088	3,215
R572-48-31T-36B	31T	1,102	28,0	1,339	34,0	1,339	34,0	2,559	65,0	2,441	62,0	8,768	3,977

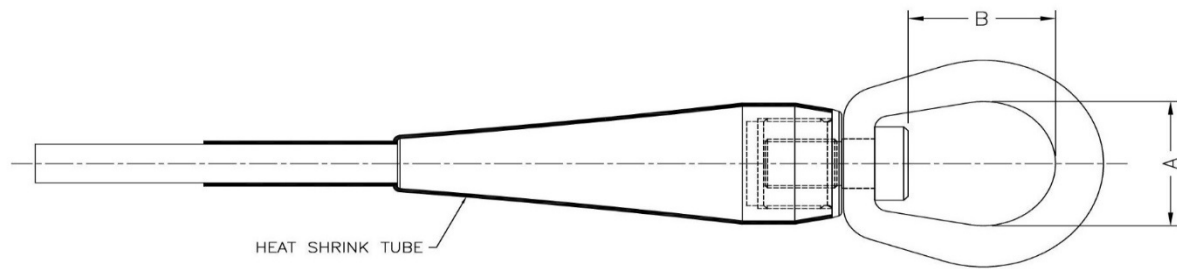
R572-49 T Terminal



PART NUMBER	SIZE	A		B		C		GRIP		BACKING PLATE	WEIGHT	
		in	mm	in	mm	in	mm	in	mm		lbs	kg
R572-49-03T81	3,8T	0,563	14,3	1,102	28,0	3,898	99,0	0,370	9,4	GIBB 7mm	0,564	0,256
R572-49-03T81A	3,8T	0,500	12,7	1,083	27,5	2,362	60,0	0,315	8,0	BSI 5mm	0,452	0,205
R572-49-03T81B	3,8T	0,496	12,6	1,083	27,5	2,677	68,0	0,315	8,0	BLUEWAVE 5mm	0,452	0,205
R572-49-05T01	5T	0,563	14,3	1,102	28,0	3,819	97,0	0,370	9,4	GIBB 7mm	0,679	0,308
R572-49-05T01B	5T	0,559	14,2	1,142	29,0	2,992	76,0	0,315	8,0	BLUEWAVE 7mm	0,679	0,308
R572-49-05T02A	5T	0,500	12,7	1,083	27,5	2,362	60,0	0,315	8,0	BSI 5mm	0,551	0,250
R572-49-05T02B	5T	0,496	12,6	1,083	27,5	2,677	68,0	0,315	8,0	BLUEWAVE 5mm	0,551	0,250
R572-49-07T01	7T	0,701	17,8	1,260	32,0	4,724	120,0	0,551	14,0	GIBB 10mm	1,188	0,539
R572-49-07T01A	7T	0,701	17,8	1,535	39,0	3,543	90,0	0,551	14,0	BSI 10mm	1,120	0,508
R572-49-07T01B	7T	0,701	17,8	1,417	36,0	3,937	100,0	0,551	14,0	BLUEWAVE 10mm	1,164	0,528
R572-49-09T01	9T	0,701	17,8	1,260	32,0	5,472	139,0	0,551	14,0	GIBB 10mm	1,484	0,673
R572-49-09T01A	9T	0,701	17,8	1,535	39,0	3,543	90,0	0,551	14,0	BSI 10mm	1,257	0,570
R572-49-09T01B	9T	0,701	17,8	1,417	36,0	3,937	100,0	0,551	14,0	BLUEWAVE 10mm	1,294	0,587
R572-49-12T-01C	12T	0,701	17,8	1,260	32,0	5,472	139,0	ON REQUEST	ON REQUEST		1,865	0,846
R572-49-15T-01C	15T	0,701	17,8	1,260	32,0	5,472	139,0	ON REQUEST	ON REQUEST		2,053	0,931

NAVTEC FRANCE

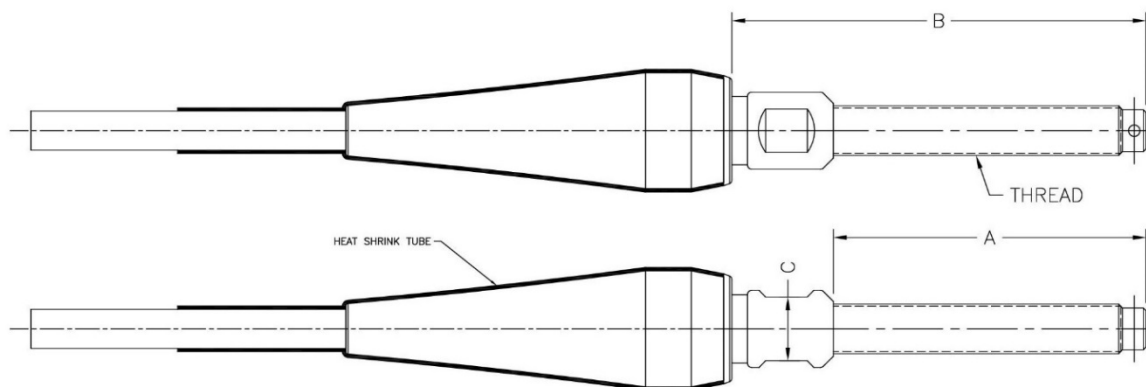
R572-50 Swivel Eye



PART NUMBER	SIZE	A		B		WEIGHT	
		in	mm	in	mm	lbs	kg
R572-50-03T81	3,8T	1,260	32,0	1,260	32,0	0,439	0,199
R572-50-05T01	5T	1,260	32,0	1,260	32,0	0,516	0,234
R572-50-07T01	7T	0,984	25,0	1,102	28,0	0,816	0,370
R572-50-09T01	9T	1,496	38,0	1,417	36,0	1,041	0,472
R572-50-12T01	12T	1,890	48,0	1,929	49,0	1,953	0,886
R572-50-15T01	15T	1,890	48,0	1,929	49,0	2,132	0,967
R572-50-20T01A	20T	1,870	47,5	2,201	55,9	3,706	1,681

R572-51 Threaded Stud

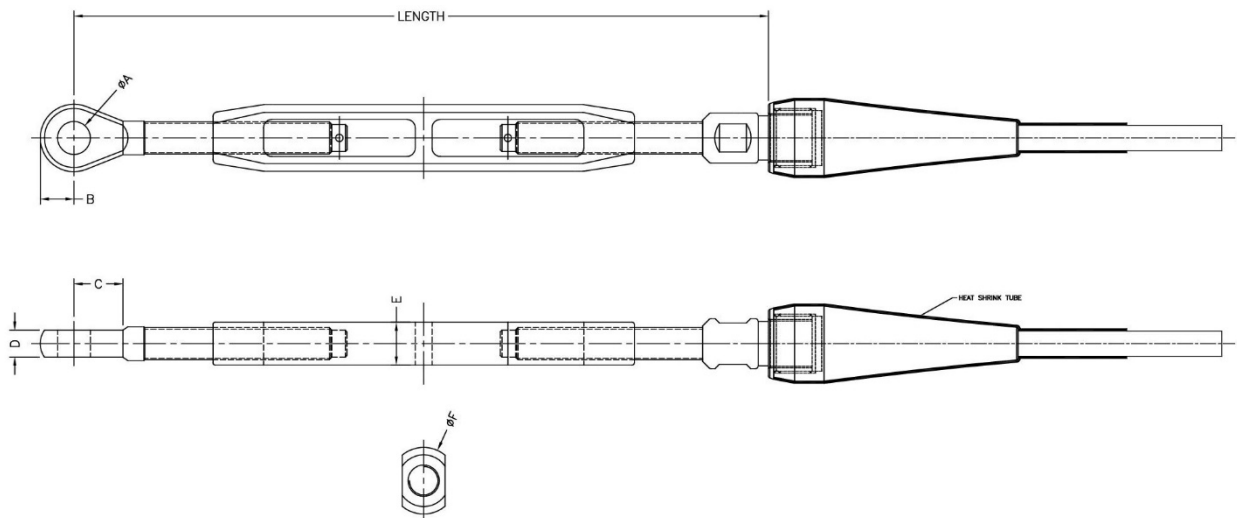
Used with soft Kevlar cable. Made from high-strength aluminum. Includes the socket, cone and 316 Stainless Steel reducer with threaded studs.



PART NUMBER	SIZE	A		B		C		THREAD UNF	WEIGHT	
		in	mm	in	mm	in	mm		lbs	kg
R572-51-03T8-12B	3,8T	2,441	62,0	2,756	70,0	0,276	7,0	3/8-24	0,260	0,118
R572-51-03T8-14	3,8T	2,953	75,0	3,543	90,0	0,492	12,5	7/16-20	0,273	0,124
R572-51-05T-16B	5T	3,150	80,0			0,591	15,0	1/2-20	0,448	0,203
R572-51-07T-16B	7T	3,150	80,0			0,669	17,0	1/2-20	0,624	0,283
R572-51-07T-20B	7T	3,937	100,0			0,669	17,0	5/8-18	0,661	0,300
R572-51-09T-20B	9T	3,937	100,0	5,197	132,0	0,748	19,0	5/8-18	0,933	0,423
R572-51-12T-24B	12T	4,724	120,0	6,378	162,0	0,945	24,0	3/4-16	1,609	0,730
R572-51-12T-28B	12T	5,512	140,0	7,087	180,0	0,945	24,0	7/8-14	1,883	0,854
R572-51-15T-24B	15T	4,724	120,0	6,378	162,0	0,945	24,0	3/4-16	1,770	0,803
R572-51-15T-28B	15T	5,512	140,0	7,087	180,0	0,945	24,0	7/8-14	2,044	0,927
R572-51-20T-28B	20T	5,512	140,0	7,323	186,0	1,063	27,0	7/8-14	2,593	1,176
R572-51-25T-32B	25T	6,693	170,0	8,543	217,0	1,260	32,0	1-12	3,823	1,734
R572-51-31T-36B	31T	7,087	180,0	8,858	225,0	1,339	34,0	1 1/8-12	5,099	2,313

NAVTEC FRANCE

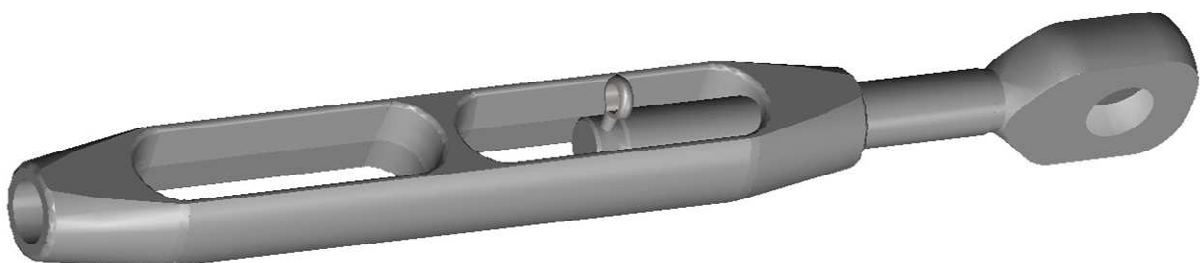
R572-51 Threaded Stud with Marine Eye Turnbuckle



SIZE	A (Hole Ø)		B		C		D	
	in	mm	in	mm	in	mm	in	mm
9T	0,650	16,5	0,709	18,0	0,945	24,0	0,472	12,0
12T	0,768	19,5	0,886	22,5	1,339	34,0	0,598	15,2
12T *	0,906	23,0	0,925	23,5	1,181	30,0	0,709	18,0
15T	0,768	19,5	0,886	22,5	1,339	34,0	0,598	15,2
15T *	0,906	23,0	0,925	23,5	1,181	30,0	0,709	18,0
20T	0,906	23,0	0,925	23,5	1,181	30,0	0,709	18,0
25T	1,024	26,0	1,043	26,5	1,339	34,0	0,787	20,0
31T	1,122	28,5	1,299	33,0	1,969	50,0	0,984	25,0

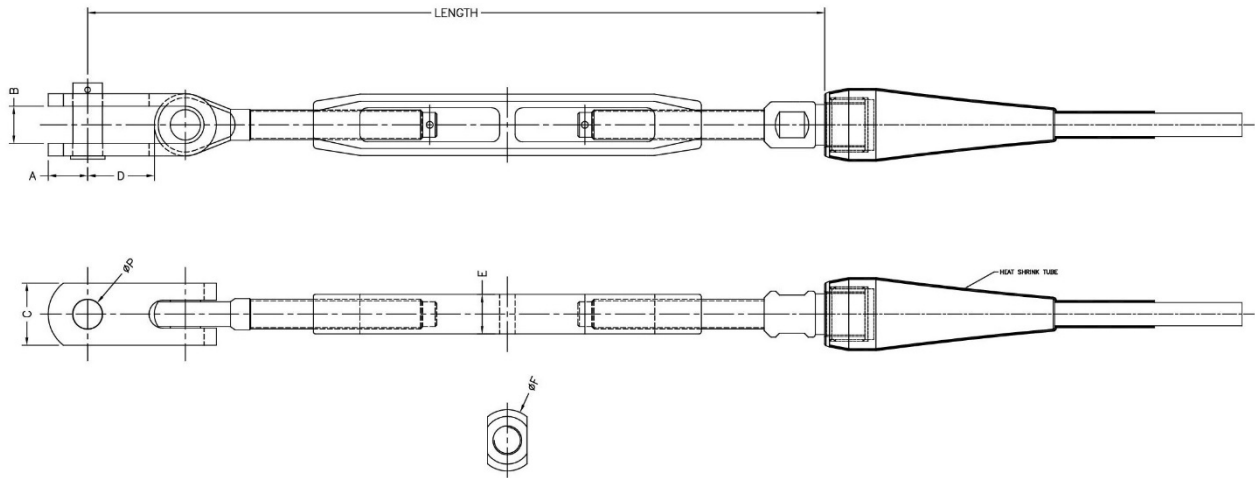
SIZE	LENGTH CLOSED		LENGTH OPEN		E		F (Body Ø)		WEIGHT	
	in	mm	in	mm	in	mm	in	mm	lbs	kg
9T	11,181	284,0	16,378	416,0	0,815	20,7	1,331	33,8	2,452	1,112
12T	13,071	332,0	19,370	492,0	1,000	25,4	1,555	39,5	4,154	1,884
12T *	15,433	392,0	23,071	586,0	1,181	30,0	1,807	45,9	6,404	2,905
15T	13,071	332,0	19,370	492,0	1,000	25,4	1,555	39,5	4,314	1,957
15T *	15,433	392,0	23,071	586,0	1,181	30,0	1,807	45,9	6,565	2,978
20T	15,433	392,0	23,071	586,0	1,181	30,0	1,807	45,9	7,114	3,227
25T	18,268	464,0	27,717	704,0	1,417	36,0	1,969	50,0	10,106	4,584
31T	19,213	488,0	28,819	732,0	1,575	40,0	2,205	56,0	13,907	6,308

* PIN SIZE 7/8" (22,0mm)



NAVTEC FRANCE

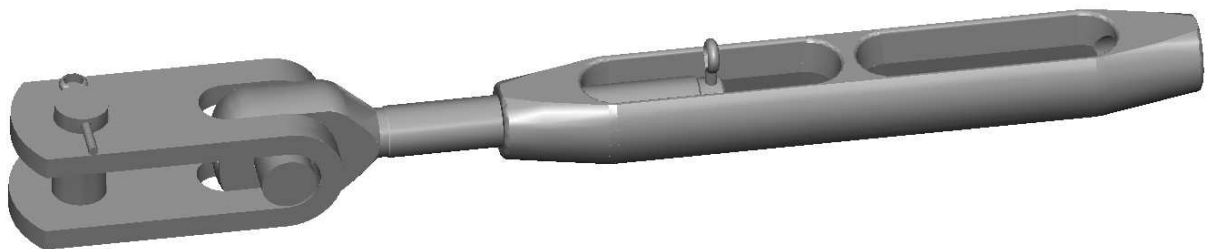
R572-51 Threaded Stud with Toggle Turnbuckle



SIZE	P (Pin Ø)		A		B		C		D	
	in	mm	in	mm	in	mm	in	mm	in	mm
9T	0,618	15,7	0,787	20,0	0,787	20,0	1,378	35,0	1,575	40,0
12T	0,748	19,0	1,000	25,4	0,945	24,0	1,575	40,0	1,693	43,0
12T *	0,866	22,0	1,181	30,0	1,024	26,0	1,969	50,0	1,850	47,0
15T	0,748	19,0	1,000	25,4	0,945	24,0	1,575	40,0	1,693	43,0
15T *	0,866	22,0	1,181	30,0	1,024	26,0	1,969	50,0	1,850	47,0
20T	0,866	22,0	1,181	30,0	1,024	26,0	1,969	50,0	1,850	47,0
25T	1,000	25,4	1,417	36,0	1,260	32,0	2,362	60,0	2,047	52,0
31T	1,102	28,0	1,339	34,0	1,339	34,0	2,559	65,0	2,441	62,0

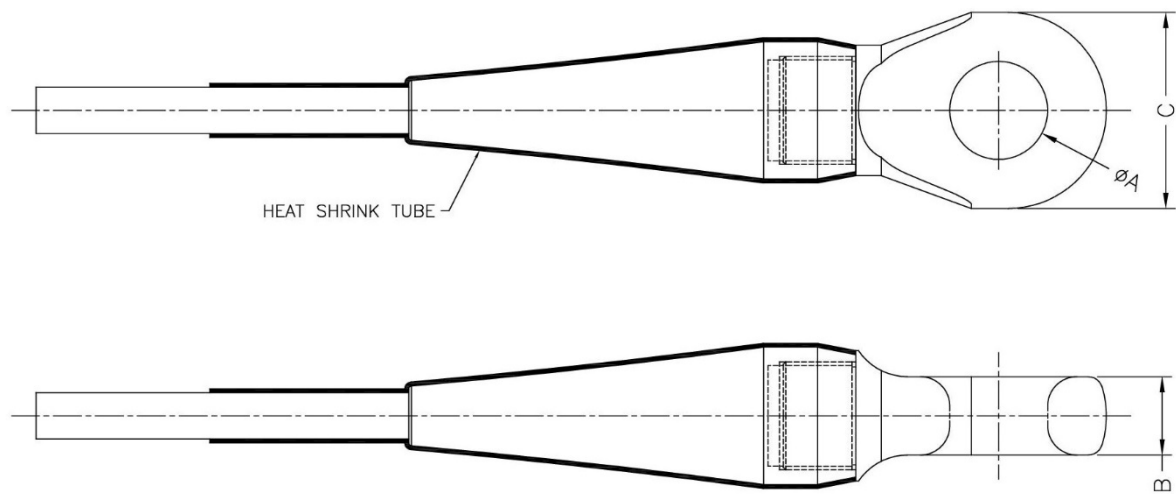
SIZE	LENGTH CLOSED		LENGTH OPEN		E		F (Body Ø)		WEIGHT	
	in	mm	in	mm	in	mm	in	mm	lbs	kg
9T	13,465	342,0	18,661	474,0	0,815	20,7	1,331	33,8	3,276	1,486
12T	15,551	395,0	21,850	555,0	1,000	25,4	1,555	39,5	5,582	2,532
12T *	18,189	462,0	25,827	656,0	1,181	30,0	1,807	45,9	8,519	3,864
15T	15,551	395,0	21,850	555,0	1,000	25,4	1,555	39,5	5,743	2,605
15T *	18,189	462,0	25,827	656,0	1,181	30,0	1,807	45,9	8,680	3,937
20T	18,189	462,0	25,827	656,0	1,181	30,0	1,807	45,9	9,229	4,186
25T	21,378	543,0	30,827	783,0	1,417	36,0	1,969	50,0	13,666	6,199
31T	22,953	583,0	32,559	827,0	1,575	40,0	2,205	56,0	18,250	8,278

* PIN SIZE 7/8" (22,0mm)



NAVTEC FRANCE

R572-55 Lashing Eye



PART NUMBER	SIZE	A (Hole ϕ)		B		C		WEIGHT	
		in	mm	in	mm	in	mm	lbs	kg
R572-55-03T8-01	3,8T	0,500	12,7	0,500	12,7	1,250	31,8	0,207	0,094
R572-55-05T01	5T	0,626	15,9	0,583	14,8	1,500	38,1	0,335	0,152
R572-55-07T01	7T	0,748	19,0	0,701	17,8	1,750	44,5	0,529	0,240
R572-55-9T01	9T	0,874	22,2	0,850	21,6	2,000	50,8	0,725	0,329
R572-55-12T01	12T	1,248	31,7	1,000	25,4	2,500	63,5	1,171	0,531
R572-55-15T01	15T	1,374	34,9	0,043	1,1	2,752	69,9	1,541	0,699
R572-55-20T01	20T	1,437	36,5	1,248	31,7	3,000	76,2	2,022	0,917
R572-55-25T05	25T	1,500	38,1	1,299	33,0	3,000	76,2	3,750	1,701
R572-55-31T05	31T	1,752	44,5	1,374	34,9	3,374	85,7	5,163	2,342
R572-55-43T05	43T	1,969	50,0	1,102	28,0	3,150	80,0	7,641	3,466
R572-55-54T05	54T	2,165	55,0	1,378	35,0	3,937	100,0	9,370	4,250



NAVTEC FRANCE

PBO Biconic End Fittings

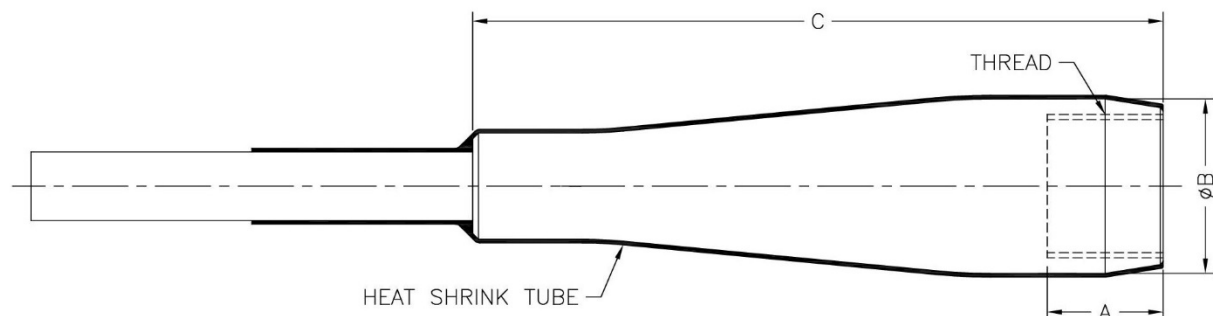
All Navtec biconic terminals have been designed and optimized to take advantage of the strength of the fiber cable that they are being applied to. For Aramid cables, we offer biconic terminals made from aluminum, stainless steel, or titanium to suit any application or budget. For our PBO cables, we offer our biconic terminals in titanium due to the unique requirements of the PBO fiber.

All Navtec fittings have been designed and applied to each Aramid or PBO cable size to provide adequate strength for any strength or stretch application. Our fittings use standard pin sizes and dimensions that make retrofit and new rig application easy. Alternatively, Navtec can supply any number or non-standard pin sizes or fitting dimensions to suit specific applications; The female thread in our biconic terminal offers one of the most versatile attachment available. Virtually any custom fitting design can be adapted to fit our terminals.

PBO Fiber Cable

SIZE	COVER DIAMETER		MINIMUM BREAKING STRENGTH		WEIGHT		STRETCH EQUIVALENT	
	in	mm	lbs	kg	lbs/ft	kg/m	N50 rod	1x19
5,3T	0,315	8,0	11 684	5 300	0.037	0,050	-8	7mm, 9/32
8,7T	0,394	10,0	19 180	8 700	0.050	0,076	-12	8mm, 5/16
12,4T	0,465	11,8	27 337	12 400	0.072	0,112	-17	11mm, 7/16
16T	0,516	13,1	35 274	16 000	0.085	0,135	-22	12mm
21T	0,591	15,0	46 297	21 000	0.111	0,176	-30	14mm, 9/16
27T	0,661	16,8	59 525	27 000	0.140	0,224	-40	16mm, 5/8
35T	0,756	19,2	77 162	35 000	0.182	0,285	-48	19mm, 3/4
45T	0,866	22,0	99 208	45 000	0.241	0,376	-60	22mm, 7/8
57T	0,929	23,6	125 663	57 000	0.312	0,471	-76	22mm, 7/8
71T	1,031	26,2	156 528	71 000	0.410	0,777	-91	26mm, 1
88T	1,130	28,7	194 007	88 000	0.520	0,693	-115	28mm, 1 1/8
106T	1,252	31,8	233 690	106 000	0.793	0,852	-150	32mm, 1 1/4

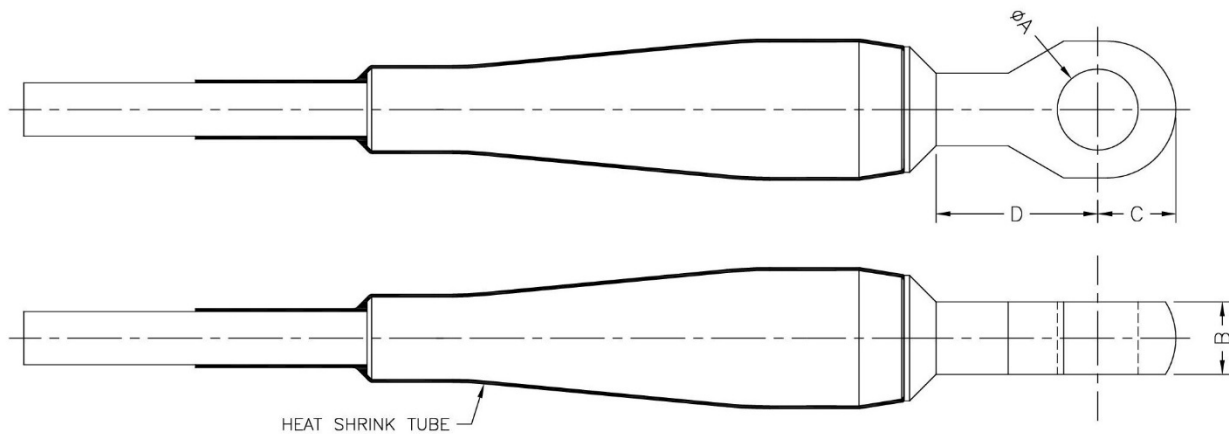
R576-06 PBO Titanium Socket



NAVTEC FRANCE

PART NUMBER	SIZE	THREAD Metric	A (Thread length)		B (Body Ø)		C		WEIGHT	
			in	mm	in	mm	in	mm	lbs	kg
R576-06-05T35	5,3T	M20x150	0,630	16,0	0,878	22,3	3,150	80,0	0,137	0,062
R576-06-08T75	8,7T	M22x150	0,630	16,0	1,063	27,0	3,803	96,6	0,247	0,112
R576-06-12T45	12,4T	M25x150	0,748	19,0	1,142	29,0	4,252	108,0	0,331	0,150
R576-06-16T05	16T	M30x200	0,866	22,0	1,358	34,5	5,000	127,0	0,505	0,229
R576-06-21T05-2	21T	M32x200	1,063	27,0	1,528	38,8	5,709	145,0	0,628	0,285
R576-06-27T05-2	27T	M36x200	1,181	30,0	1,713	43,5	5,984	152,0	0,959	0,435
R576-06-35T05-2	35T	M38x200	1,378	35,0	1,854	47,1	6,732	171,0	1,226	0,556
R576-06-45T05	45T	M42x200	1,575	40,0	2,079	52,8	8,268	210,0	1,806	0,819
R576-06-57T05	57T	M48x200	1,575	40,0	2,366	60,1	9,382	238,3	3,153	1,430
R576-06-71T05	71T	M58x200	1,654	42,0	2,835	72,0	11,366	288,7	4,343	1,970
R576-06-88T05	88T	M65x300	1,654	42,0	3,150	80,0	11,378	289,0	5,115	2,320
R576-06-115T05	106T	M70x300	1,654	42,0	3,394	86,2	12,941	328,7	6,173	2,800

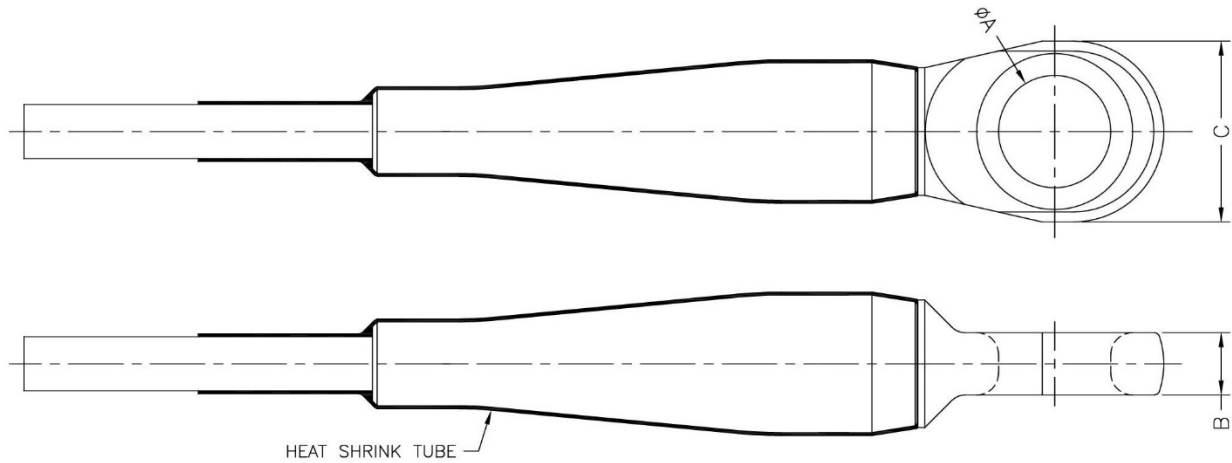
R576-07 Eye PBO



PART NUMBER	SIZE	A (Max. Hole Ø)		B		C		D		WEIGHT	
		in	mm	in	mm	in	mm	in	mm	lbs	kg
R576-07-05T35-16	5,3T	0,512	13,0	0,394	10,0	0,492	12,5	0,945	24,0	0,225	0,102
R576-07-08T75-20	8,7T	0,630	16,0	0,531	13,5	0,571	14,5	1,024	26,0	0,322	0,146
R576-07-12T45-24	12,4T	0,760	19,3	0,630	16,0	0,709	18,0	1,260	32,0	0,545	0,247
R576-07-16T05-24	16T	0,760	19,3	0,709	18,0	0,787	20,0	1,299	33,0	0,866	0,393
R576-07-21T05-28	21T	0,886	22,5	0,787	20,0	0,906	23,0	1,890	48,0	1,385	0,628
R576-07-27T05-32	27T	1,012	25,7	0,866	22,0	1,004	25,5	1,890	48,0	2,156	0,978
R576-07-35T05-36	35T	1,142	29,0	1,024	26,0	1,102	28,0	2,283	58,0	2,853	1,294

NAVTEC FRANCE

R576-20 Lashing Eye PBO



PART NUMBER	SIZE	A (Hole \varnothing)		B		C		WEIGHT	
		in	mm	in	mm	in	mm	lbs	kg
R576-20-05T35	5,3T	0,906	23,0	0,374	9,5	1,378	35,0	0,273	0,124
R576-20-08T75	8,7T	1,063	27,0	0,591	15,0	1,654	42,0	0,459	0,208
R576-20-12T45	12,4T	1,260	32,0	0,669	17,0	1,969	50,0	0,701	0,318
R576-20-16T05	16T	1,339	34,0	0,728	18,5	2,126	54,0	1,056	0,479
R576-20-21T05	21T	1,417	36,0	0,787	20,0	2,283	58,0	1,625	0,737
R576-20-27T05	27T	1,575	40,0	0,866	22,0	2,638	67,0	2,601	1,180
R576-20-35T05	35T	1,752	44,5	0,984	25,0	2,874	73,0	3,351	1,520

NAVTEC FRANCE

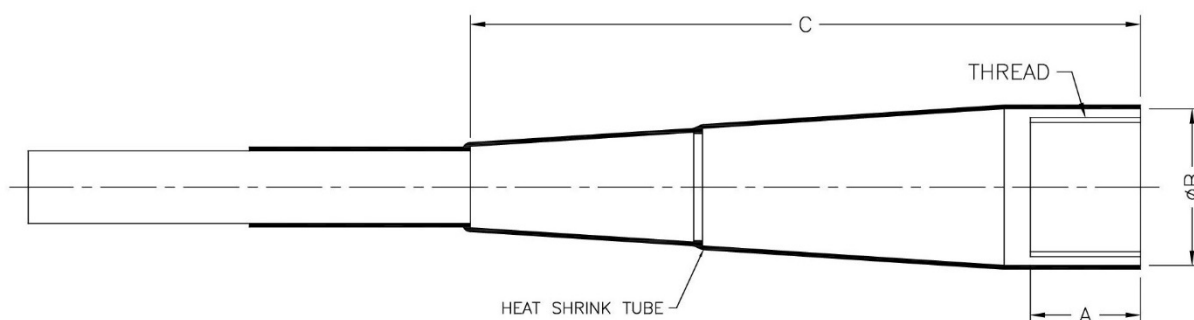
Anti-Torsion (AT) Cable

The increasing requirement of furling headsails on numerous projects has led to the development of Navtec's Anti-Torsion (AT) Aramid or PBO cable. This cable's unique internal construction makes it the best choice for permanently installed furling Headstays. Navtec has worked closely with furler suppliers to provide the most torsion resistant cable assembly available today. Navtec terminations can be easily fitted directly to existing furling units. We have also worked to supply direct connections between the biconic socket and furler, resulting in the cleanest, lightest connection available. Navtec can custom design Anti-Torsion cable end fitting that are compatible with roller furlers from most manufacturers.

Anti-Torsion (AT) Aramid Fiber Cable

SIZE	COVER DIAMETER		MINIMUM BREAKING STRENGTH		WEIGHT		STRETCH EQUIVALENT	
	in	mm	lbs	kg	lbs/ft	kg/m	N50 rod	1x19
14T	0,677	17,2	30 865	14 000	0,156	0,232	-17	10mm
19T	0,827	21,0	41 888	19 000	0,192	0,285	-22	12mm
24T	0,866	22,0	52 911	24 000	0,235	0,350	-30	14mm, 9/16
30T	0,984	25,0	66 139	30 000	0,309	0,460	-40	16mm, 5/8
40T	1,138	28,9	88 185	40 000	0,410	0,611	-48	19mm, 3/4
54T	1,272	32,3	119 050	54 000	0,054	0,080	-60	22mm, 7/8
75T	1,571	39,9	165 347	75 000	0,773	1,150	-91	26mm, 1
90T	1,677	42,6	198 416	90 000	0,995	1,480	-115	28mm, 1 1/8
120T	1,961	49,8	264 555	120 000	1.241	1.850	-150	32mm, 1 1/4

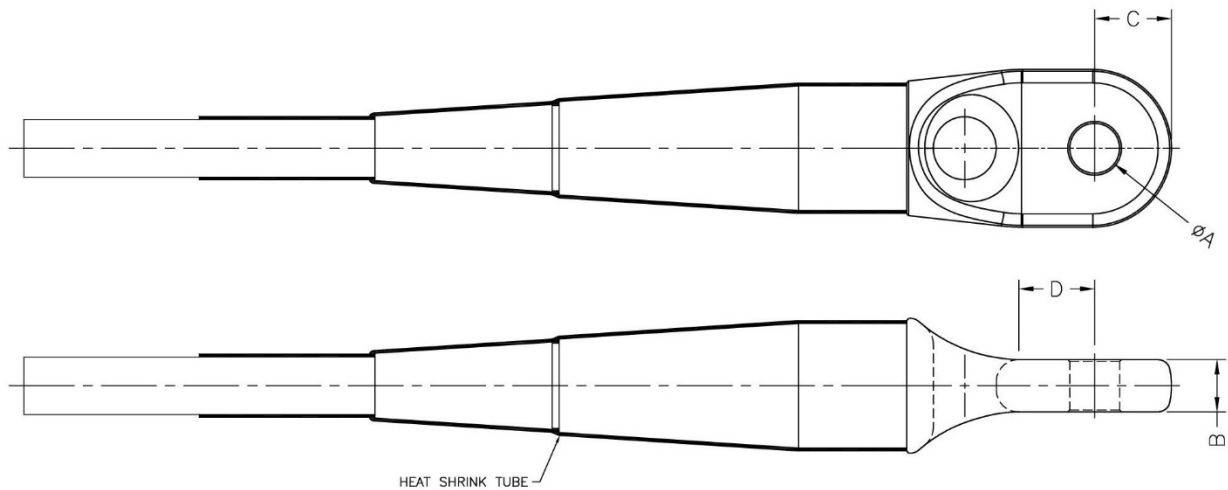
R572-05 Kevlar Stainless steel Anti-Torsion sockets



PART NUMBER	SIZE	THREAD Metric	A (Thread length)		B (Body Ø)		C		WEIGHT	
			in	mm	in	mm	in	mm	lbs	kg
R572-05-15T01	14T AT	M38x200	1,063	27,0	1,654	42,0	6,024	153,0	1,168	0,530
R572-05-20T01	19T AT	M40x200	1,181	30,0	1,768	44,9	6,654	169,0	1,424	0,646
R572-05-25T01	24T AT	M44x200	1,339	34,0	1,949	49,5	7,953	202,0	1,916	0,869
R572-05-31T01	30T AT	M48x200	1,496	38,0	2,126	54,0	9,094	231,0	2,601	1,180
R572-05-43T01	40T AT	M54x250	1,654	42,0	2,421	61,5	10,276	261,0	5,467	2,480
R572-05-54T01	54T AT	M68x250	1,969	50,0	2,945	74,8	11,063	281,0	6,724	3,050
R572-05-75T01	75T AT	M81x250	2,362	60,0	3,524	89,5	13,189	335,0	12,015	5,450
R572-05-90T01	90T AT	M82x250	2,362	60,0	3,937	100,0	15,512	394,0	14,121	6,405
R572-05-120T01	120T AT	M100x300	2,362	60,0	4,724	120,0	18,622	473,0	18,739	8,500

NAVTEC FRANCE

R572-16 Kevlar Stainless steel Anti-Torsion Flat eye with Lashing hole



PART NUMBER	SIZE	A (Hole Ø)		B		C		D		WEIGHT	
		in	mm	in	mm	in	mm	in	mm	lbs	kg
R572-16-15Txx	14T AT	ON REQUEST	ON REQUEST	ON REQUEST	ON REQUEST	ON REQUEST	ON REQUEST	ON REQUEST	ON REQUEST	TBC	TBC
R572-16-20Txx	19T AT	ON REQUEST	ON REQUEST	ON REQUEST	ON REQUEST	ON REQUEST	ON REQUEST	ON REQUEST	ON REQUEST	TBC	TBC
R572-16-25Txx	24T AT	ON REQUEST	ON REQUEST	ON REQUEST	ON REQUEST	ON REQUEST	ON REQUEST	ON REQUEST	ON REQUEST	TBC	TBC
R572-16-31Txx	30T AT	ON REQUEST	ON REQUEST	ON REQUEST	ON REQUEST	ON REQUEST	ON REQUEST	ON REQUEST	ON REQUEST	TBC	TBC
R572-16-43Txx	40T AT	ON REQUEST	ON REQUEST	ON REQUEST	ON REQUEST	ON REQUEST	ON REQUEST	ON REQUEST	ON REQUEST	TBC	TBC
R572-16-54Txx	54T AT	ON REQUEST	ON REQUEST	ON REQUEST	ON REQUEST	ON REQUEST	ON REQUEST	ON REQUEST	ON REQUEST	TBC	TBC
R572-16-75Txx	75T AT	ON REQUEST	ON REQUEST	ON REQUEST	ON REQUEST	ON REQUEST	ON REQUEST	ON REQUEST	ON REQUEST	TBC	TBC
R572-16-90Txx	90T AT	ON REQUEST	ON REQUEST	ON REQUEST	ON REQUEST	ON REQUEST	ON REQUEST	ON REQUEST	ON REQUEST	TBC	TBC
R572-16-120Txx	120T AT	ON REQUEST	ON REQUEST	ON REQUEST	ON REQUEST	ON REQUEST	ON REQUEST	ON REQUEST	ON REQUEST	TBC	TBC

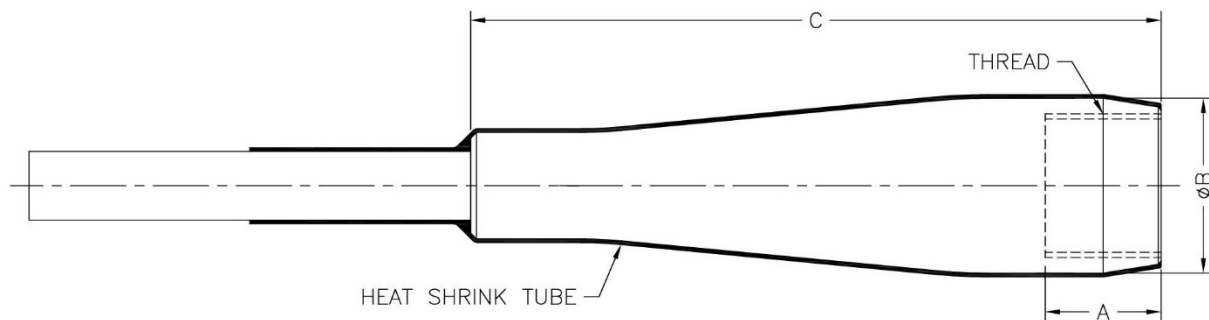
NAVTEC FRANCE



Anti-Torsion (AT) PBO Fiber Cable

SIZE	COVER DIAMETER		MINIMUM BREAKING STRENGTH		WEIGHT		STRETCH EQUIVALENT	
	in	mm	lbs	kg	lbs/ft	kg/m	N50 rod	1x19
22T	0,669	17,0	48 502	22 000	0.111	0,25	-30	14mm, 9/16
28T	0,768	19,5	61 729	28 000	0.140	0,31	-40	16mm, 5/8
36T	0,843	21,4	79 366	36 000	0.182	0,39	-48	19mm, 3/4
46T	0,894	22,7	101 413	46 000	0.241	0,46	-60	22mm, 7/8
54T	0,984	25,0	119 050	54 000	0.312	0,54	-76	22mm, 7/8
71T	1,126	28,6	156 528	71 000	0.410	0,70	-91	26mm, 1
88T	1,280	32,5	194 007	88 000	0.520	0,90	-115	28mm, 1 1/8
106T	1,362	34,6	233 690	106 000	0.793	1,00	-150	32mm, 1 1/4

R576-06 PBO Titanium Anti-Torsion sockets

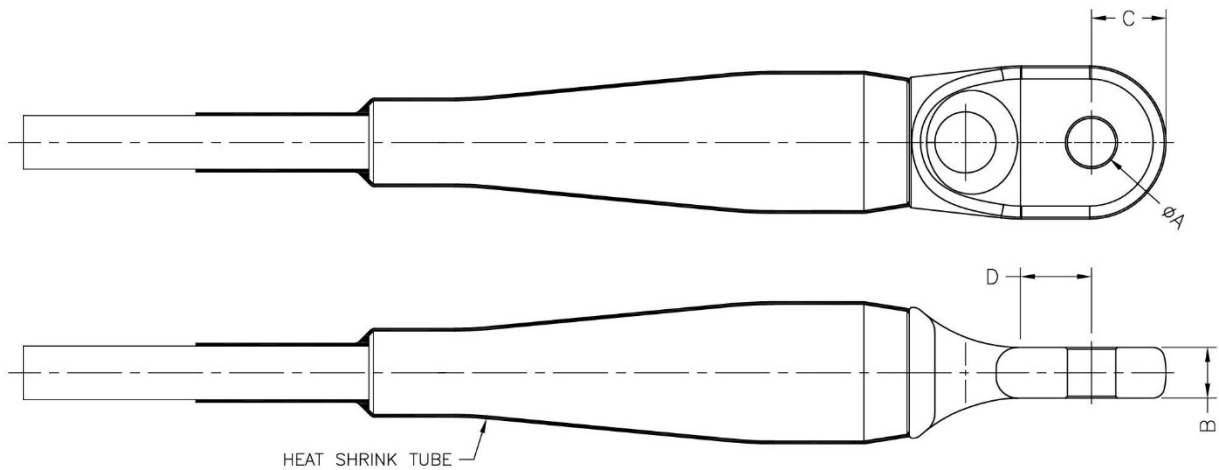


PART NUMBER	SIZE	THREAD Metric	A (Thread length)		B (Body Ø)		C		WEIGHT	
			in	mm	in	mm	in	mm	lbs	kg
R576-06-21T05-2	21T	M32x200	1,063	27,0	1,528	38,8	5,709	145,0	0,628	0,285
R576-06-27T05-2	27T	M36x200	1,181	30,0	1,713	43,5	5,984	152,0	0,959	0,435
R576-06-35T05-2	35T	M38x200	1,378	35,0	1,854	47,1	6,732	171,0	1,226	0,556
R576-06-45T05	45T	M42x200	1,575	40,0	2,079	52,8	8,268	210,0	1,806	0,819
R576-06-57T05	57T	M48x200	1,575	40,0	2,366	60,1	9,382	238,3	3,153	1,430
R576-06-71T05	71T	M58x200	1,654	42,0	2,835	72,0	11,366	288,7	4,343	1,970
R576-06-88T05	88T	M65x300	1,654	42,0	3,150	80,0	11,378	289,0	5,115	2,320
R576-06-115T05	106T	M70x300	1,654	42,0	3,394	86,2	12,941	328,7	6,173	2,800

NAVTEC FRANCE



R576-06 PBO Titanium Anti-Torsion Flat eye with Lashing hole



PART NUMBER	SIZE	A (Hole Ø)		B		C		D		WEIGHT	
		in	mm	in	mm	in	mm	in	mm	lbs	kg
R576-16-21Txx	21T	ON REQUEST	ON REQUEST	ON REQUEST	ON REQUEST	ON REQUEST	ON REQUEST	ON REQUEST	ON REQUEST	TBC	TBC
R576-16-27Txx	27T	ON REQUEST	ON REQUEST	ON REQUEST	ON REQUEST	ON REQUEST	ON REQUEST	ON REQUEST	ON REQUEST	TBC	TBC
R576-16-35Txx	35T	ON REQUEST	ON REQUEST	ON REQUEST	ON REQUEST	ON REQUEST	ON REQUEST	ON REQUEST	ON REQUEST	TBC	TBC
R576-16-45Txx	45T	ON REQUEST	ON REQUEST	ON REQUEST	ON REQUEST	ON REQUEST	ON REQUEST	ON REQUEST	ON REQUEST	TBC	TBC
R576-16-57Txx	57T	ON REQUEST	ON REQUEST	ON REQUEST	ON REQUEST	ON REQUEST	ON REQUEST	ON REQUEST	ON REQUEST	TBC	TBC
R576-16-71Txx	71T	ON REQUEST	ON REQUEST	ON REQUEST	ON REQUEST	ON REQUEST	ON REQUEST	ON REQUEST	ON REQUEST	TBC	TBC
R576-16-88Txx	88T	ON REQUEST	ON REQUEST	ON REQUEST	ON REQUEST	ON REQUEST	ON REQUEST	ON REQUEST	ON REQUEST	TBC	TBC
R576-16-115Txx	106T	ON REQUEST	ON REQUEST	ON REQUEST	ON REQUEST	ON REQUEST	ON REQUEST	ON REQUEST	ON REQUEST	TBC	TBC

